



ASKING PRICE

£285,000

Dockwray Close

North Shields, NE30 1JW

Welcome to this splendid three-storey home located on Dockwray Close in the charming area of North Shields. This property boasts four spacious bedrooms, along with a family bathroom/wc making it an ideal choice for families or those seeking extra space. The master bedroom features a convenient en-suite shower room, providing a private retreat for relaxation.

The ground floor comprises a welcoming lounge and dining area, perfect for entertaining guests or enjoying family meals. The well-appointed kitchen is designed for both functionality and style, while a downstairs WC adds to the convenience of this lovely home.

Outside, you will find a drive and garage, offering ample parking and storage options. The property is ideally located, providing easy access to local amenities, schools, and transport links, making it a perfect choice for those who value both comfort and convenience. Don't miss the opportunity to make this wonderful property your new home.

4



2



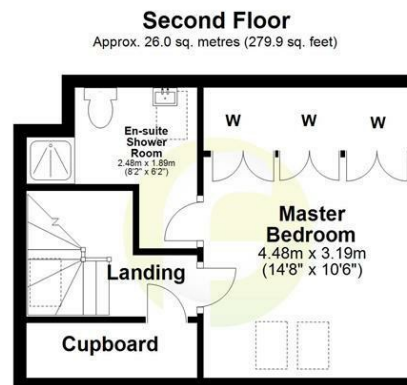
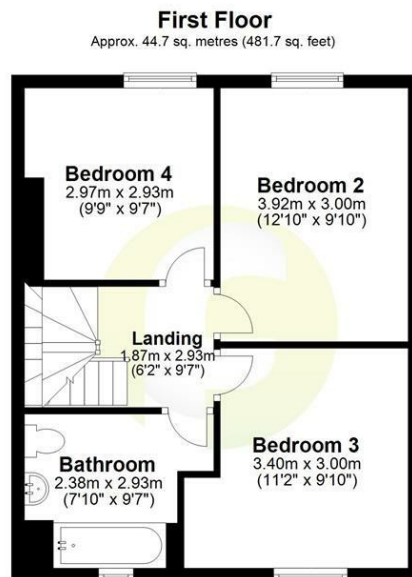
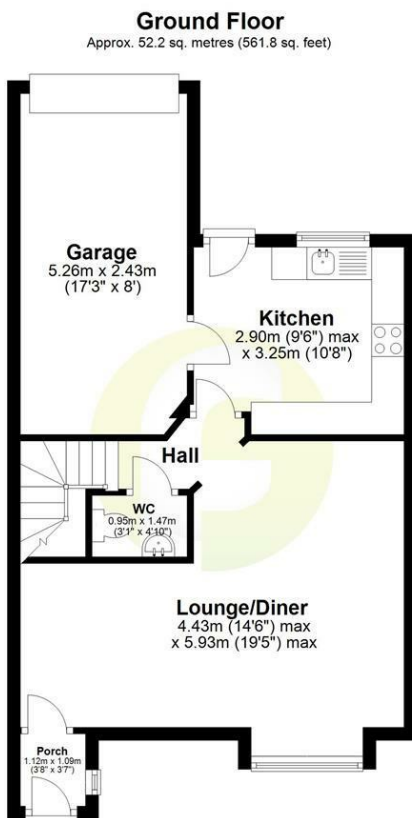
1











Total area: approx. 122.9 sq. metres (1323.4 sq. feet)

LOCAL AUTHORITY

North tyneside

TENURE

Freehold

COUNCIL TAX BAND

D

VIEWINGS

By prior appointment only

Energy Efficiency Rating		
	Current	Potential
Very energy efficient - lower running costs		
(92 plus) A		
(81-91) B		
(69-80) C		
(55-68) D		
(39-54) E		
(21-38) F		
(1-20) G		
Not energy efficient - higher running costs		
England & Wales		EU Directive 2002/91/EC

Agents Note: Whilst every care has been taken to prepare these particulars, they are for guidance purposes only. All measurements are approximate and are for general guidance purposes only and whilst every care has been taken to ensure their accuracy, they should not be relied upon and potential buyers/tenants are advised to recheck the measurements



OFFICE ADDRESS

63 Church Way
North Shields
Tyne & Wear
NE29 0AE

OFFICE DETAILS

0191 257 6823
hello@fresh.property
www.freshpropertycentre.co.uk